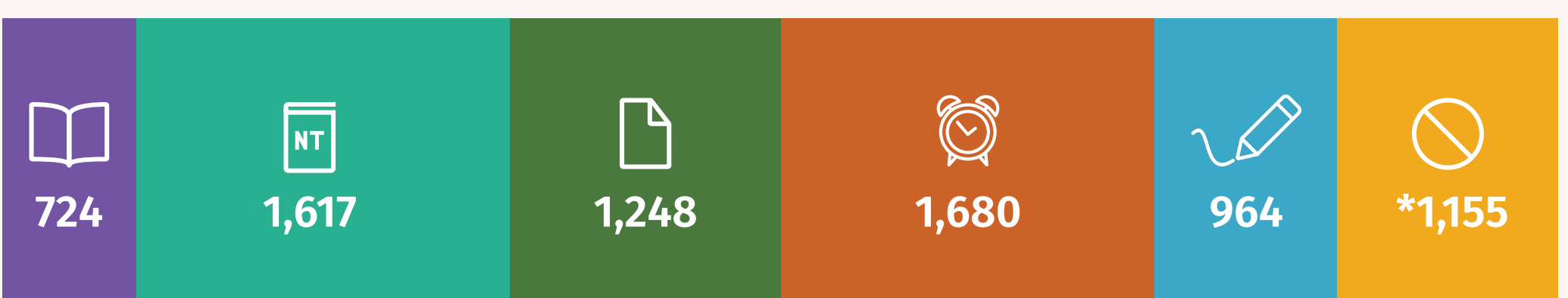


KEY

- Full Bible
- New Testament
- Portions
- Need Bible translation to start
- Initial work in progress
- No Scripture, likely no need

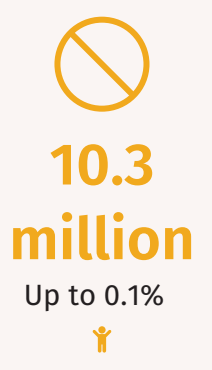
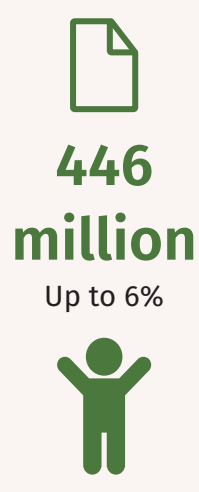
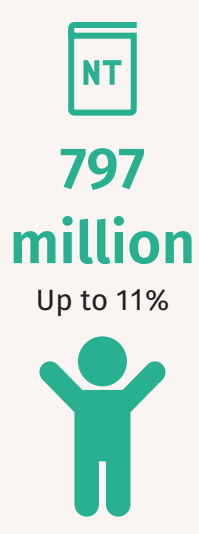
Languages with and without Scripture



7,388 known living languages, including 386 sign languages

* In most cases, the people use another language which already has at least some Scripture. Sometimes, their first language is disappearing from use altogether.

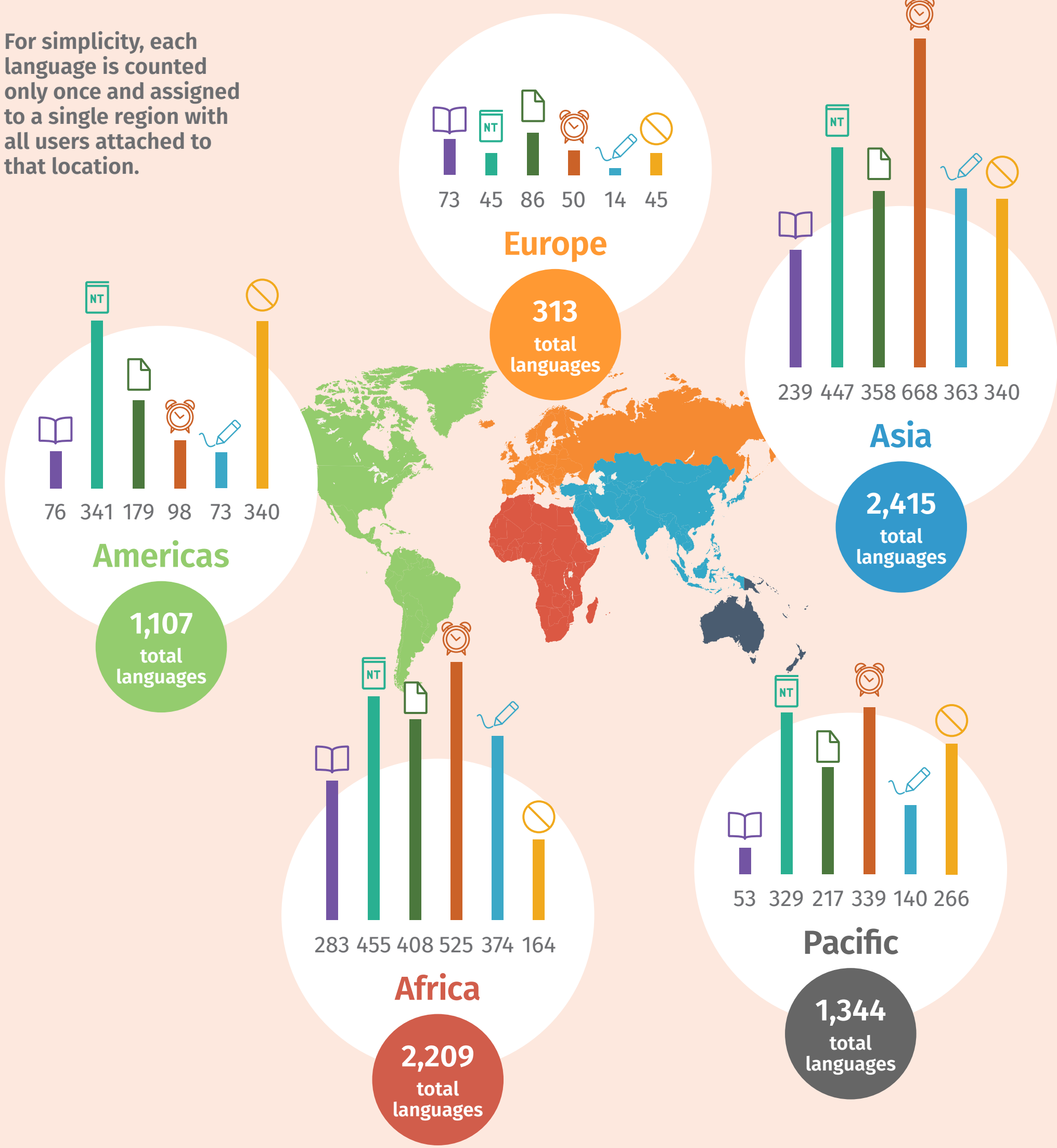
People with and without Scripture



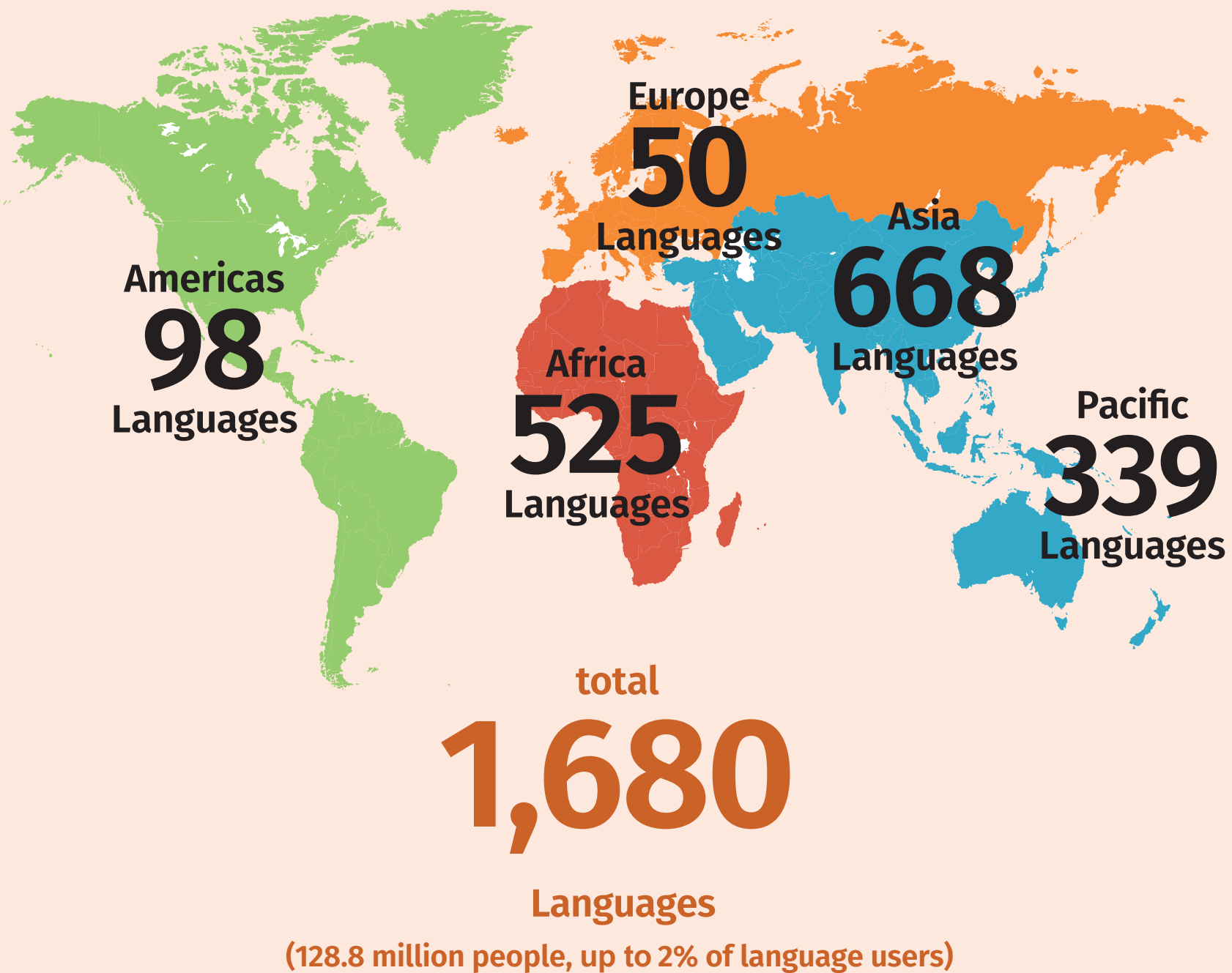
According to SIL's Ethnologue, 7.36 billion people use the world's 7,388 known languages. However, language user statistics tend to lag behind actual population statistics. The global population is expected to reach 8 billion by November 2022. For statistical agreement, percentages used here are based on the Ethnologue number.

Scripture access by region

For simplicity, each language is counted only once and assigned to a single region with all users attached to that location.



Need Bible translation to start



The numbers on the map refer to languages where work is already being requested or is likely to be needed.

About these statistics

Wycliffe Global Alliance compiles Scripture access statistics annually from data provided through ProgressBible by Bible translation organisations and partners. Data is based on the most recently available information about first language users in SIL's Ethnologue.