

This is My Museum

Museum of the Alphabet



This is my Museum. We come to the museum to learn about history and alphabets from around the world. When I walk in, there are friendly people at the desk that can help if I have questions.





The lights in the museum are bright. As I walk around, I can hear videos playing on TVs. Maybe I'll bring sunglasses and noise cancelling headphones or earplugs!

When I visit, there are bags we can carry to do a treasure hunt. I even get a prize at the end!



MUSEUM OF THE ALPHABET

CELL PHONE TOUR

SCAN THE CODE BELOW TO ACCESS OUR
CELL PHONE TOUR.

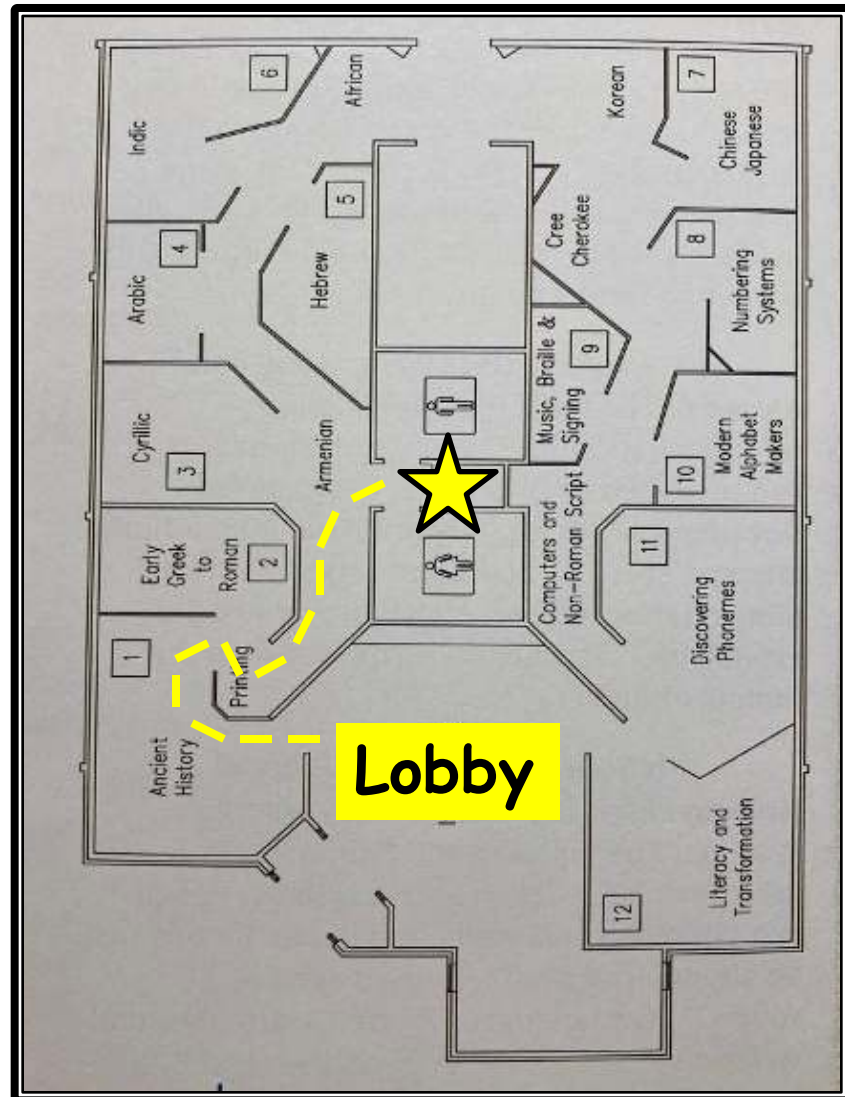
TYPE THE # IN YOUR KEYPAD TO
KNOW WHERE YOU ARE ON THE
TOUR.

JAARS.ORG/ABC



My museum also has a tour I can listen to, read, or watch! They say I just need to use my smart device camera to scan a code.

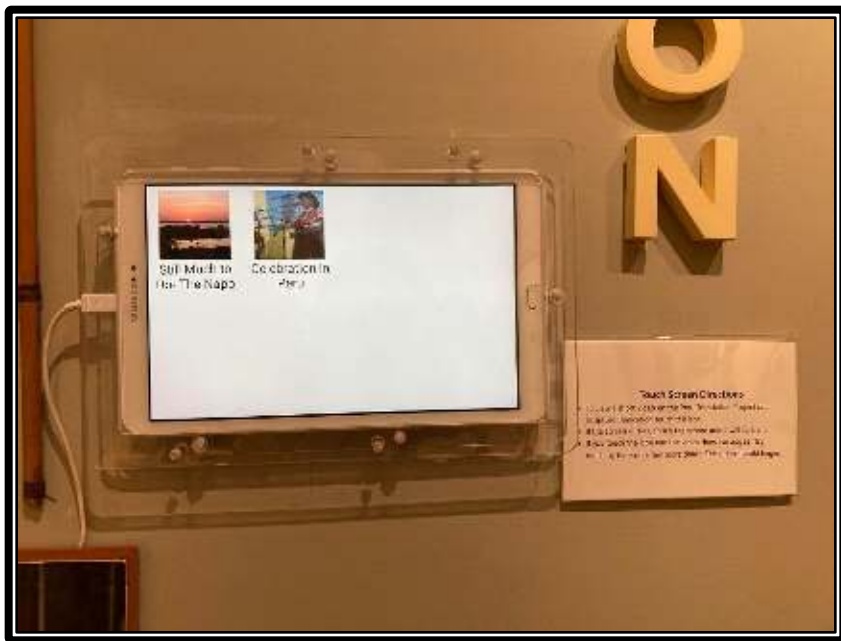
There are bathrooms and a water fountain at my museum. I just go past the Gutenberg Printing Press to find them. I can also use this map to find them!





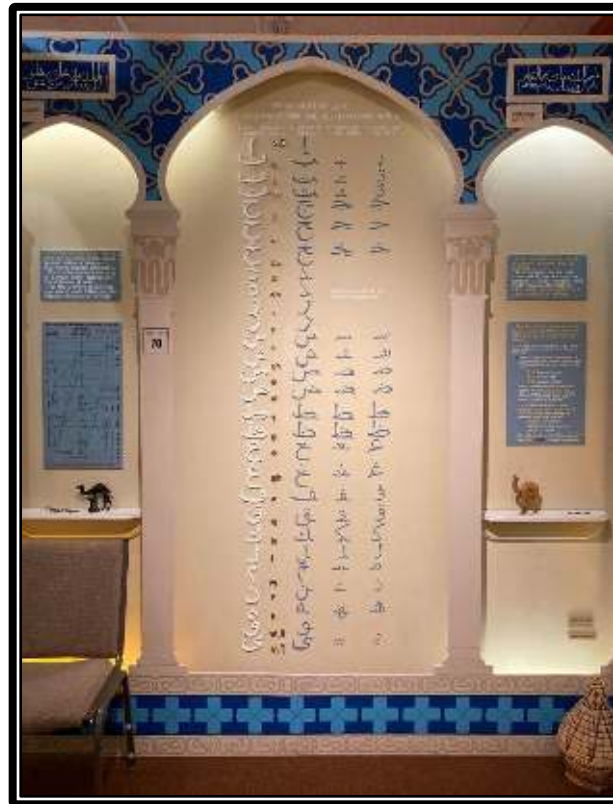
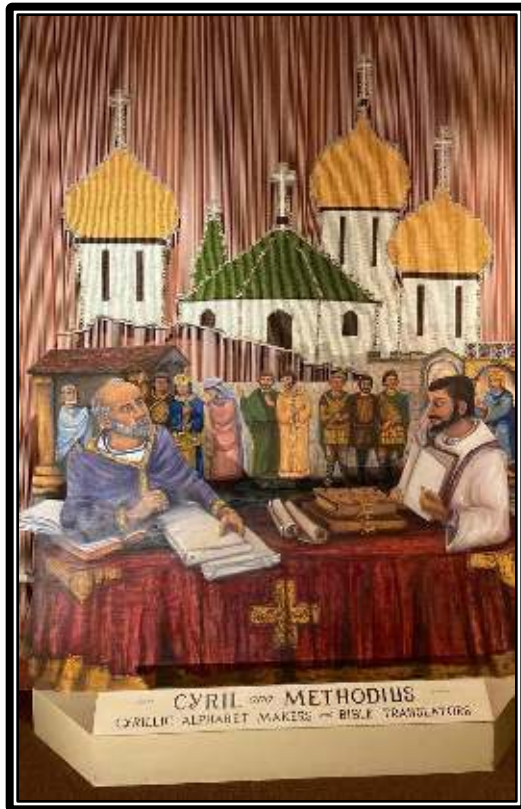
My museum has rules. I need to use my inside voice and my walking feet. There are seats in each room I can sit in if my feet get tired. And if I need to use a wheelchair, they even have one I can use!

I also need to keep my hands to myself because there are things in the museum that are old and can be damaged. There are signs that help remind me not to touch objects. There are some things I can touch like puzzles, tablets, and computers.



← Things I can touch →

These are the times I can visit my museum.



Monday: 9 a.m. – 4 p.m.

Tuesday: 9 a.m. – 4 p.m.

Wednesday: 9 a.m. – 4 p.m.

Thursday: 9 a.m. – 4 p.m.

Friday: 9 a.m. – 4 p.m.

Saturday: 9 a.m. – 4 p.m.



Visiting Museum of the Alphabet is so much fun!
I can't wait to come back!



Library Connections

innovative solutions for the library professional

www.libraryconnections.net
MegandDan@libraryconnections.net

MegandDan@librariesandautism.org

Dan Weiss

Director, Fanwood Memorial Library

14 Tillotson Rd.
Fanwood, NJ 07023
Phone: 908.322.6400
www.fanwoodlibrary.org

Meg Kolaya

Director, Scotch Plains Public Library

1927 Bartle Ave.
Scotch Plains, NJ 07076
Phone: 908.322.5007
www.ScotLib.org

Designed by Adrienne Robertiello
Meg Kolaya & Dan Weiss
Copyright © 2008

www.librariesandautism.org