

PC-6
SP
 Special
 Procedure

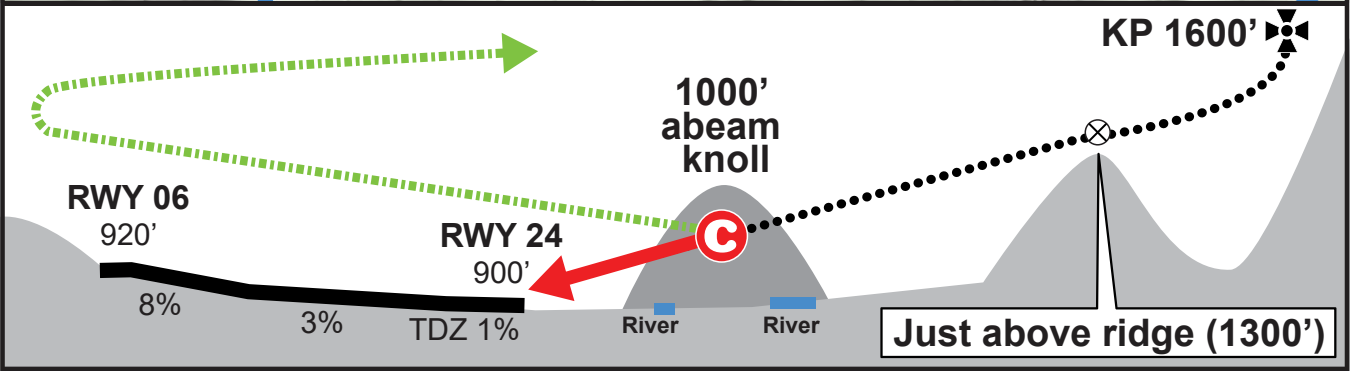
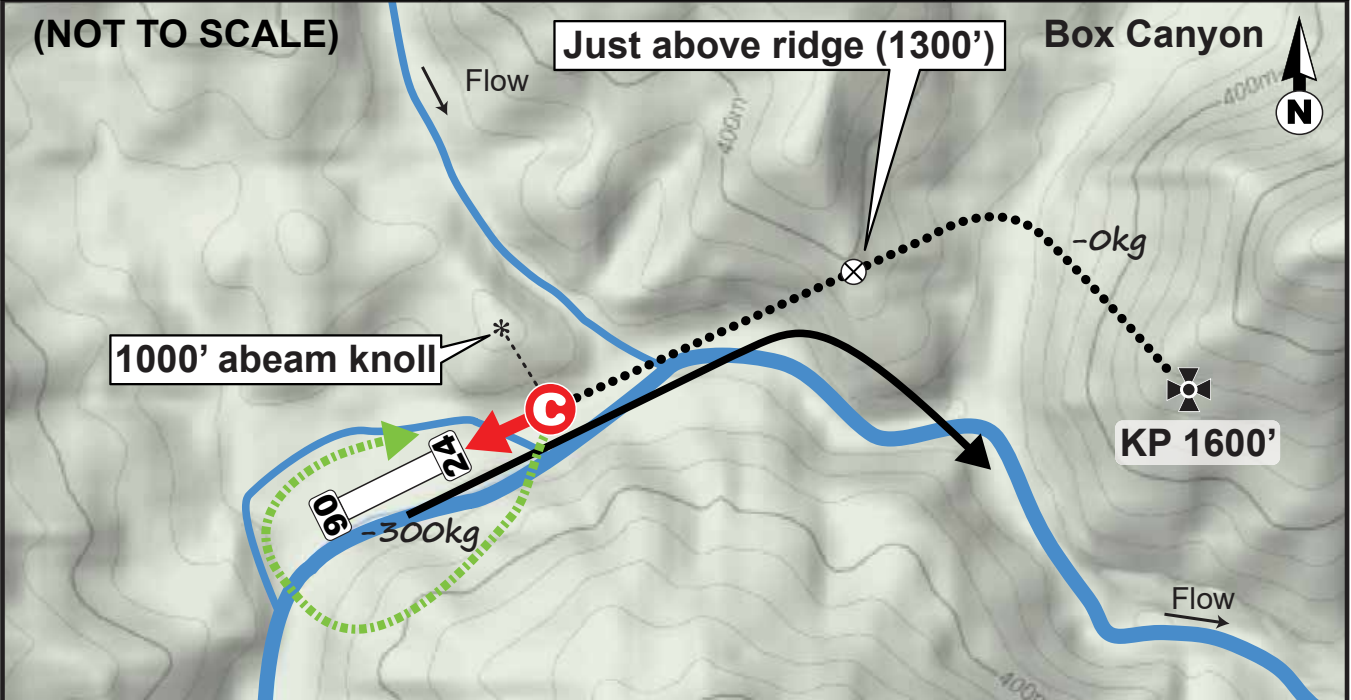
WAJJ 158nm
 VHF **124.0** | Elev(ft) **900**
 Lgth/Width(M) **505 / 14**

Surface / Defined by
 Grass / Markers

Acodi ACO ZZZZ
 Wind Time: **none**
 Precip: **No** | GPS **+3**

RWY
24
 TDZ %
1
 *
 C
 X

RWY
06
 TDZ %
na
 X
 N/A
 *



HAZARDS / OBSTACLES / REMARKS ETC.

New runway as of may 2017. Surface is rough clumpy grass, lots of drag. Runway has boudners / undulations that will launch aircraft before its ready to fly.

↓ * **24 Landing -0 / 2660 kg Wind: Max 5 kts Tailwind**
 Commit Point: 900' Abeam knoll on the right.
 Go-Around: Fade left after and hug terrain, max performance right 180 just past rwy
 Can't Stop: Continue straight off the end.

↑ * **06 Takeoff -300kg (2500gw)** with experience weight can be lifted to 2600kg
 Abort: Need description here, straight off the end.
 Departure Emergencies: Hug south terrain for left turn back to final.

X **06 Landing Not Approved**

X **24 Takeoff Not Approved**

----- **Other Notes:** -----

Weather Patterns: Generally valley open with clouds on ridges. Common to have light tailwinds on landing after 10:30. Can have turbulence for takeoff and landing.

Chief Pilot Notes: NEW AIRSTRIP APRIL 2017 NEED FEEDBACK. Surface is rough clumpy grass, lots of drag. Runway has bouncers / undulations that will launch aircraft before its ready to fly.

Training: Description here

Language / Greeting: Wano, Wah

Agent: Gembala Gum

Ministry Workers: Wano Evangelists from Mokndoma (Wilds/Ingles)

Runway Inspection Information: Watch for erosion from the river on the south side of the runway.

-- This chart is for Pilatus PC-6 Aircraft --

Acodi (ACO) Coordinates: E 138:00.55 S 03:22.60
TC from Sentani: 248° / 158nm -- TC from Wamena: 303° / 71nm

No chart can substitute for a proper checkout. This chart is for YAJASI internal use ONLY. This chart may have errors. Use of this chart by any persons other than YAJASI personnel is strictly forbidden. Report safety concerns to the YAJASI Chief Pilot.